

A swimmer in a pool, wearing goggles and a swim cap, is shown in motion, creating a splash of water. The background is a deep blue pool with lane lines.

# WaterLink® SpinTouch®

*The Ultimate  
Automated Water  
Analyzer*



Certified to  
NSF/ANSI/CAN 50

*Ready to go anywhere!*

Pool Operators | Service Technicians | Retail Professionals





# WaterLink® SpinTouch®

*Every now and then a technology emerges that changes people's lives. For people who test water, that time is now.*

The innovative **WaterLink® Spin Touch®** photometer does all your pool and spa water testing for you wherever you need it—in the field or in the store! Each sealed reagent SpinDisk® contains the precise amount of reagent needed to run a complete series of tests in just 30 or 60 seconds. Simply fill a reagent SpinDisk® with a water sample, place it in the meter, tap “start”, and all your vital tests are done automatically.

**In the field**, the results are displayed on the touchscreen, then can be transferred to WaterLink Solutions™ PRO software to be instantly analyzed, providing step-by-step treatment instructions on your mobile device and test history storage in the cloud.

**In the store**, the Spin Touch® is run directly from your computer using WaterLink Solutions™ PRO. The results are displayed right on your monitor with all records being kept in the cloud or on your hard drive.

This is the most advanced system for precise use of wet chemistry methods ever produced! Now pool and spa analysts can achieve precision without time consuming test and clean-up procedures. This ground-breaking analysis system is so simple anyone can use it! No vials to fill, no prep time, no guessing!



Scan to see video or go to  
[waterlinkspintouch.com](http://waterlinkspintouch.com)

- Reliable Results
- Super Fast & Simple
- Auto-Record Keeping
- 3-Use Disk Cuts Costs
- Rugged and Portable
- In-Store Testing

**DESIGNED FOR**  
**Service Techs**  
**Pool Operators**  
**Retail Professionals**





## Centrifugal Fluidics Photometry™

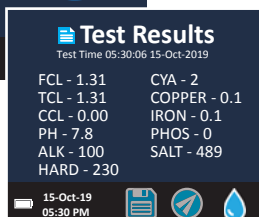
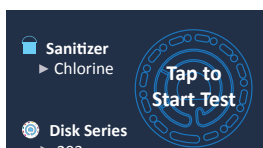
Proven analytical chemistry has combined with **Centrifugal Fluidics Photometry** to create the breakthrough **WaterLink® Spin Touch®**

### Reliable Results

- Virtually Eliminates User-Error
- Pre-Measured Reagents and Pre-Measured Sample
- Exact Reaction Time and Auto-Blanking
- Meter Calibration Check System
- 6-Wavelength Photometer

### Super Fast & Simple

- 30 Seconds for 3-Test SpinDisk®, 60 Seconds for 10-Test SpinDisk®
- Fill Disk and Insert > Tap "Start Test" > Read Results



### Auto-Record Keeping

- Stores Test Dates, Times, Results
- Upload to Cloud, Download to Computer, Print to Bluetooth® Printer (Code 5-0067)

### Stand-Alone or Cloud Ready!

- No Computer, Smartphone, or Tablet Needed
- Touchscreen Operation (multi-lingual)
- Communicate through Bluetooth® or USB

### 3-Use SpinDisk® Cuts Costs

- 3-Use SpinDisk®—Results in 30 Seconds!
- Meter Knows Which Test Section is New Test
- Also Runs 10-Test Disks for Full Test Battery—Results in 60 Seconds! (see various offerings on page 5)

### Rugged and Portable

- Innovative Water-Resistant Housing
- Internal, Rechargeable Batteries
- Optional Heavy-Duty, Waterproof Carrying Case

### Advanced Cloud Software

- Android and iPhone Apps Enable Live Connections to Mobile Cloud Software
- WaterLink Solutions™ PRO Software Offer Treatment Recommendations, Test Result Collection, and Much More!

### In-Store Testing

- Fully Compatible with WaterLink Solutions™ PRO
- Advanced Optics
- Immune to Power or Computer Outages (can still run tests and get results)

Note: The labs listed to the right do not include Spin Disks which are sold separately.

## WaterLink® Spin Touch®

### Code 3580

- Photometer
- Instruction Manual & Quick-Start Guide
- 3 Syringes
- Meter Check Disk
- USB Cord with USB Wall Adapter
- In-Store Kit (counter mat, poster, window decal, etc.)



## Mobile WaterLink® Spin Touch®

### Code 3581

- All of the above (excluding the In-Store Kit)
- Waterproof Carrying Case with Foam Insert (holds meter and accessories)



## Mobile Commercial WaterLink® Spin Touch®

### Code 3582

- All of the above (excluding the In-Store Kit)
- Upright Waterproof Carrying Case with Foam Insert—ideal for 3-Use disk users (holds meter and accessories)







*“Knowing more about  
your water is critical”*

Free Chlorine

Total Chlorine

Total Alkalinity

pH

Iron

Phosphate

Salt

Calcium Hardness

Biguanide

Borate

Copper

Biguanide Shock

## SPECIFICATIONS

Display:	Color 3.5" Touchscreen
Languages:	English, French, Spanish, German, Italian, Portuguese, Dutch, Swedish, Turkish, Chinese
Batteries:	Lithium Ion, Rechargeable, 150 tests per charge
Communication:	Bluetooth®, USB-C
Calibration:	Factory Set, Field Calibration via Internet Connection
Data Storage:	Last 250 Test Results with Date and Time
Water Resistance:	Rubber Over-molded Base, Rubber USB Port Plug, Gasketed Display and Hinge
Size & Weight:	8.5 L x 4.9 W x 4.1 H inches; 1.74 lb, 22.6 L x 12.7 W x 11.4 H cm; 0.79 kg
Operation:	Touchscreen, Single On/Off /Reset Button with Indicator Light
Firmware:	Internet updateable [New Test, New Test Calibrations, etc.], requires USB connection to Windows® PC
Software [optional]:	WaterLink Solutions™ PRO App for Android/iOS
Certification:	CE, Certified to NSF/ANSI/CAN 50

*Stand-Alone or Cloud-Ready*



Certified to  
NSF/ANSI/CAN 50

**NSF CERTIFICATION** The NSF/ANSI/CAN 50 certification mark on a water quality testing device (WQTD) used in recreational waters, such as pools and spas, means that the product was reviewed and certified by NSF International to meet applicable American National Standards for product design and performance. NSF tests and re-tests products to confirm that they comply with all requirements of certification for performance, accuracy and operating range. Certification levels of L1, L2, and L3 are possible with L1 being the highest rating. Go to [www.nsf.org](http://www.nsf.org) for more information.

For the most recent WaterLink Connect 2 update and the most recent Spin Touch firmware update, customers who intend to use a WaterLink Spin Touch Meter for NSF certification compliance purposes should:

1. Visit [softwarecenter.lamotte.com](http://softwarecenter.lamotte.com) and download the WaterLink Connect 2 application for Windows.
2. Plug the Spin Touch into the computer using the included USB cable.
3. Open the WaterLink Connect 2 desktop application and wait for the update to complete.

Test Factor	Application	NSF Certified Range	NSF Level
			Accuracy/Overall
pH	Pool	6.4-8.6	L1
	Spa/Hot Tub	6.4-8.6	L1
Free Chlorine	Pool	0-15 ppm	L1
	Spa/Hot Tub	0-7 ppm	L1
Chlorine, Combined	Pool	0-1 ppm	L1
	Spa/Hot Tub	0-1 ppm	L1
Cyanuric Acid	Pool	5-50 ppm	L1
	Spa/Hot Tub	5-50 ppm	L1

Effective June 2023. Based on a 12 month shelf life. Other test factors not evaluated by NSF.

Go to [www.nsf.org](http://www.nsf.org) to review the latest levels, ranges, shelf life, firmware versions supported, and a current listing of LaMotte NSF 50 certified products.

The genius behind the Spin Touch® is its **Patented Centrifugal Fluidics Reagent SpinDisk®**—designed to analyze 10 or 3 parameters simultaneously!

## 10 Test Parameters Disks

Ideal for Service, In-Store, and Public Pool Testing

60  
SECONDS

See Test  
Parameters in  
Chart Below



### RECYCLE YOUR DISKS!

Ship us your used disks—we'll grind and recycle them. For details, go to [www.waterlinkspintouch.com/support](http://www.waterlinkspintouch.com/support)

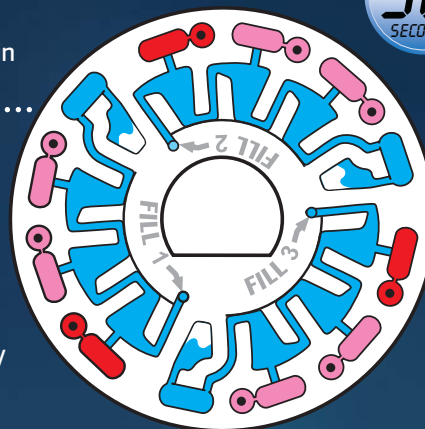


## Test 3 Parameters, 3 Times!

Ideal for Public Pools testing throughout the day

30  
SECONDS

See Test  
Parameters in  
Chart Below

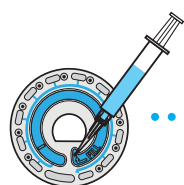


Combined  
Chlorine is  
calculated by  
Spin Touch™

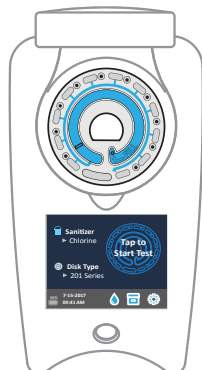
## WaterLink® SpinDisk® Series

Order Code	4328	4329	4330	4331	4334	4335	4340
Series #	103	203	303	402	501	601	701
Uses per Disk	1	1	1	1	3	3	3
Test Parameter	Range						
Free Chlorine [DPD]	0-15 ppm	■	■	■	■	■	■
Total Chlorine [DPD]	0-15 ppm	■	■	■	■		
Bromine [DPD]	0-33 ppm	■	■	■	■	■	■
pH	6.4-8.6	■	■	■	■	■	■
Calcium Hardness	0-800 ppm	■	■	■	■		
Total Alkalinity	0-250 ppm	■	■	■	■	■	
Cyanuric Acid	5-150 ppm	■	■	■			■
Copper	0-3.0 ppm	■	■	■	■		
Iron	0-3.0 ppm	■	■	■	■		
Salt	0-5000 ppm	■	■	■			
Phosphate	0-2000 ppb		■				
Borate	0-80 ppm			■	■		
Biguanide	0-70 ppm				■		
Biguanide Shock	0-250 ppm				■		

Disk Patent No. 8,734,734 | FCI Patent No. 8,987,000 | TCI Patent No. 8,993,337 FCI EU Patent No. EP2784503 A1



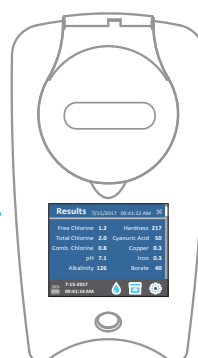
Fill the disk



Insert the  
disk



Tap  
"Start Test"



Results in 30  
or 60 Seconds

So Simple!  
So Fast!  
So Precise!



# WaterLink Solutions™ PRO

## The Complete Water Analysis Solution



Create a free account at  
[softwarecenter.lamotte.com](http://softwarecenter.lamotte.com)

This versatile and robust cloud-based water analysis program stores records, offers customizable treatment recommendation reports, and can be accessed from any internet connected device. Apps are available for supported Android® and iOS® devices.

- A fully featured web-based water analysis program for pools, spas, or any other body of water
- Powerful, customizable treatment engine can handle any chemical system
- Colorful graphs and charts provide intuitive data analysis
- Schedule jobs and complete work orders
- Connect with WaterLink Solutions™ HOME users for a cutting edge customer relationship
- Free to use for one user



Sites



Properties



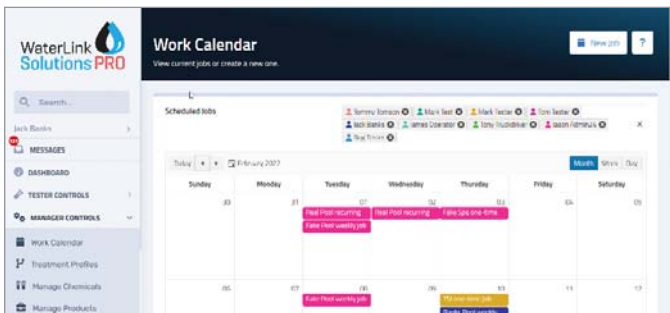
Contacts

### Flexible Data

Customer records are broken down into Sites, Properties, and Contacts.

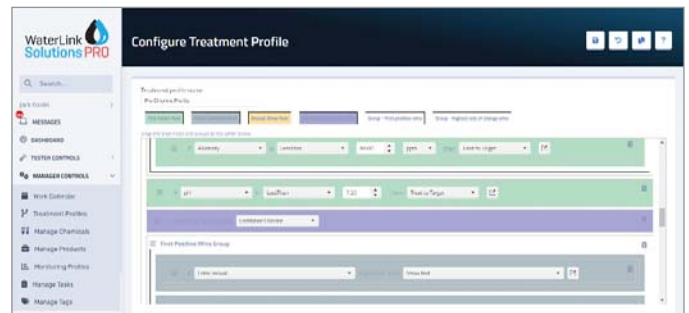
- Sites are pools or spas, or any body of water you test.
- Properties are physical locations where the Site exists.
- Contacts are people to notify when the water test is complete

Connect these entities to build relationships between them. Manage as much or as little of the data as meets your needs.



### Work Calendar

Schedule recurring or single jobs for your customers, complete with customizable tasks, water testing, and a professional e-Receipt of the completed work.

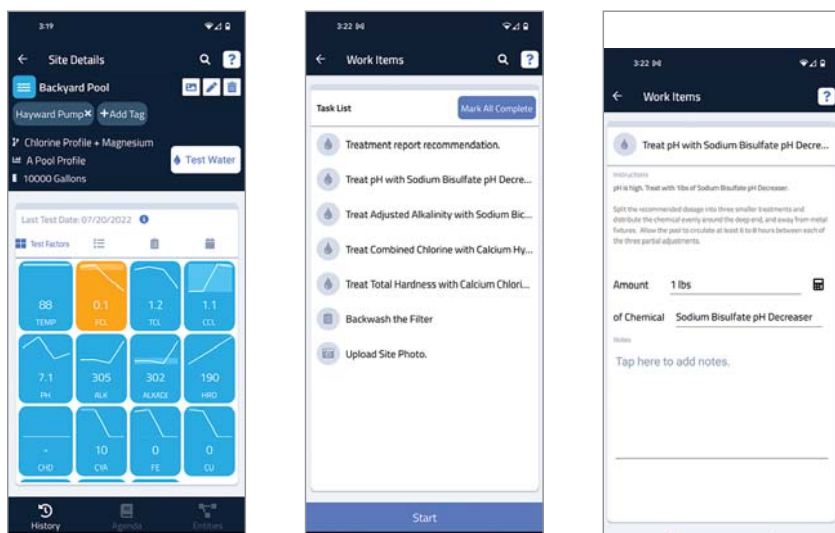


### Customizable Recommendations

Utilize the most powerful and customizable treatment engine in the industry. Set treatment conditions using the visually and logically complete rules editor. This level of customization can support any treatment plan for any chemistry or product line.

## Water Analysis To-Go

The WaterLink Solutions™ PRO app for Android® and iOS® devices lets you test water anywhere, anytime.



## Quick Work

Use the Work Wizard to complete scheduled jobs or just test on the fly. Receive full, step-by-step treatment recommendations for any customer in your database. Complete custom tasks and record actual dosage amounts for chemical treatments. Finish up by emailing a professional e-Receipt detailing the completed work to your customer. Everything is automatically saved in the cloud.

## Free to Use

Visit [SoftwareCenter.LaMotte.com](https://SoftwareCenter.LaMotte.com) to sign up for a free account today. Optional monthly paid subscription tiers grant additional user licenses so multiple users can simultaneously log in.



## WaterLink Solutions™ Home App

WaterLink Solutions™ Home app offers pool and spa owners the ability to connect with their local retailer who is using WaterLink Solutions™ PRO water analysis program. This allows homeowners to stay in touch with their local pool and spa professional. When connected to a Pro account, Home users can utilize the treatment profiles and chemicals from their local pool and spa professional, receiving treatment recommendations based on chemicals sold at their local retailer. The Home app is able to receive test results from the ColorQ® 2x photometer through Bluetooth® along with photo-scan our Insta-TEST® strips. Pro users can monitor Home user testing in real time.

## Already use LaMotte Software?

WaterLink® DataMate® 9 and 10 have sadly been retired. Users can immediately migrate their entire customer database to WaterLink Solutions™ PRO today and never miss a test. DataMate® Web users can also upgrade and migrate to WaterLink Solutions™ PRO as well. It's absolutely free.

Contact Software Support at [softwaresupport@lamotte.com](mailto:softwaresupport@lamotte.com) for details.



# WaterLink Solutions™ PRO



## Accessible from PC or Mobile Devices

WaterLink Solutions, the web-based application, is accessible from any internet connected device. Use your internet browser on your PC or download the WaterLink Solutions mobile app for Android® and iOS® devices.

## Integrated with the WaterLink® Spin Touch®

Connect the WaterLink® Spin Touch® to your PC with a USB cable, or transfer results over Bluetooth® to the Android® or iOS® apps on your mobile device.

## PC Software Requirements for WaterLink Solutions™ PRO:

Google Chrome™, Microsoft Edge® and Firefox® are the supported browsers. Google Chrome™ is recommended for optimal performance. Microsoft .Net® Framework 4.0 is required for connection to a WaterLink Spin Lab.

## PC Hardware Requirements with Spin Lab:

**Recommended Minimum:** 2.0 GHz or faster (avoid Intel® Atom and AMD® E-Series processors); 4 GB of Ram. **Minimum Available Disk Space Required:** 6 GB. High Speed USB 2.0 port available (for use with a WaterLink® Spin Lab).

## Mobile Apps Available for Download:

- WaterLink Solutions™ Home
- WaterLink Solutions™ PRO



Android logo, Google™, and Google Chrome™ are trademarks of Google Inc.

Bluetooth® is a registered trademark of Bluetooth® SIG, Inc.

Firefox® is a trademark of the Mozilla Foundation registered in the U.S. and other countries.

iPad and iPhone are trademarks of Apple Inc., registered in the U.S. and other countries.

Microsoft Edge® and Microsoft .NET® are trademarks of the Microsoft Corporation, registered in the U.S. and other countries.



## Water Testing Leader Since 1919!

802 Washington Avenue · Chestertown · Maryland · 21620 · USA  
800-344-3100 or 410-778-3100 · [LaMotte.com](https://www.lamotte.com)